



# ARKANSAS DEPARTMENT OF HEALTH

**José R. Romero, MD, FAAP, FIDSA, FPIDS, FAAAS,  
Secretary of Health**

## **Outbreak Response/Epidemiology Influenza Weekly Report Arkansas 2021-2022**

---

**Week Ending Saturday 01/22/2022**

---

**Jennifer Dillaha, MD**  
Chief Medical Officer

**Mike Cima, PhD**  
State Epidemiologist

**Shirley Louie, MS, CIH**  
Deputy State Epidemiologist; Director, Center for Public Health Practice

**Prepared by:**

**Haytham Safi, MD, MPH**  
Epidemiology Supervisor  
Influenza Surveillance Coordinator  
[Haytham.Safi@Arkansas.gov](mailto:Haytham.Safi@Arkansas.gov)  
501-661-2920

**Reviewed by:**

**Lori Simmons, MS, Branch Chief, Epidemiology**

During flu season, the Arkansas Department of Health (ADH) produces a Weekly Influenza Report for clinicians. The report provides information on flu activity in the state. The report also compares influenza-like-illness (ILI) in Arkansas to activity in the U.S. ADH receives reports of only a fraction of flu cases since it only requires reports of hospitalizations, deaths, and outbreaks. Therefore, it is important to understand that the information in the weekly update is representative of the timing and location of activity, but it does not reflect the overall burden of disease. It is presumed that there are many more people actually affected than the report shows. Clinicians and policy makers may find the report helpful in terms of communicating to colleagues and patients about the current status of the flu season.

### **Report Key Points:**

- For Week 3, Arkansas reported “Moderate” or 6 out of 13 for Influenza-Like-Illness (ILI) activity level indicator determined by data reported to ILINet.
- Since September 27, 2021, 3,168 positive influenza tests have been reported to the ADH online database by health care providers. **Please note that reported cases reflect only a portion of the actual numbers of flu cases in the state.**
- Among flu antigen tests this season that can distinguish between influenza A and B virus types in Arkansas, 75 percent were influenza A, and 25 percent were influenza B.
- Over 2 percent of patients visiting emergency rooms this week were there for ILI (Syndromic Surveillance). About 3 percent of outpatient visits were for ILI (ILINet sentinel providers).
- The average school absenteeism rate last week was 11.6 percent among public schools.
- Arkansas reported 4 influenza-related death this flu season. In 2020-21 season, Arkansas reported 24 influenza-related deaths.
- No nursing homes have reported influenza outbreaks this season.
- Nationally, the proportion of deaths reported to the National Center for Health Statistics attributed to pneumonia and influenza (P&I) is above the epidemic threshold this week.

You can report flu year-round and view the weekly influenza report during the influenza season at: <http://www.healthy.arkansas.gov/programs-services/topics/influenza>. You can also access the reporting website directly at: <https://FluReport.ADH.Arkansas.gov>.

### **For Additional National and International Influenza Surveillance Information:**

**World Health Organization (WHO):** <https://www.who.int/tools/flunet>

**CDC - Seasonal Influenza (Flu) - Weekly Report:** <http://www.cdc.gov/flu/weekly/>

# 2021-2022 Influenza Outbreak Response/Epi Report (Week 3: 1/16/2022 – 01/22/2022)

## Death Report for Week 3

- Deaths from all causes: 874
- Deaths due to Pneumonia: 127
- PCR confirmed Flu Deaths: 0
- Death Certificate or Flu Antigen only: 1

## Cumulative Flu Deaths since 10/03/2021

- PCR confirmed Flu deaths: 1
- Death Certificate or Antigen only: 3
- Cumulative Flu deaths: 4

## Total Flu-Related Hospital Admissions

- Cumulative: 83
- Week ending 01/22/2022: 6

## Weekly Arkansas ILI Intensity Level Reported by Sentinel Providers



## PCR Lab Confirmed Influenza Cases

- Total Cases since 10/03/2021: 499
- Week ending 01/22/2022: 55

*Reported cases reflect only a portion of the actual numbers of flu cases in the state.*

PCR Tests	Week 3	Cumulative Cases Since 10/03/2021
A+	33	389
B+	1	19
Both A and B	0	4
B/Victoria	0	0
B/ Yamagata	0	0
H1N1+	0	0
H3+	21	87
Unsubtypeable	0	0
<b>Total</b>	<b>55</b>	<b>499</b>

## PCR Confirmed Influenza Cases since 10/03/2021

Age Groups	PCR+	Hospitalized	Deaths
0-4 yr.	54	2	0
5-17 yr.	149	1	0
18-24 yr.	79	1	0
25-44 yr.	109	4	0
45-64 yr.	50	13	0
>= 65 yr.	58	24	1
Unknown	0	0	0
<b>Total</b>	<b>499</b>	<b>45</b>	<b>1</b>

## School Absenteeism\*

Week Ending: 01/22/2022  
 - Percent Absent: 11.58  
 - Previous Week: 11.49

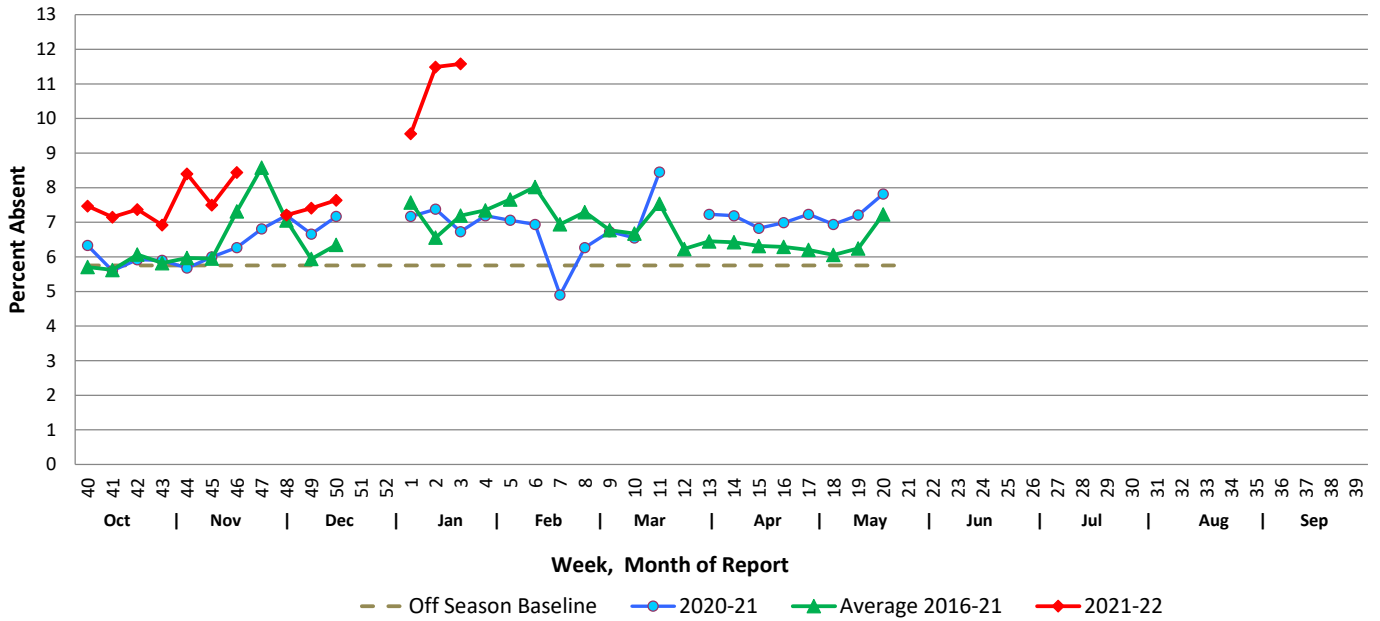
\* Average daily absenteeism for all public schools during this reporting week.

## ER Visits (Syndromic Surveillance)

- **Week Ending: 01/22/2022**  
 Weighted Average: 2.3%  
 – Total Visits: 16,978  
 – Visits with ILI: 390
- **Previous Week**  
 Weighted Average: 2.6%  
 – Total Visits: 18,421  
 – Visits with ILI: 480

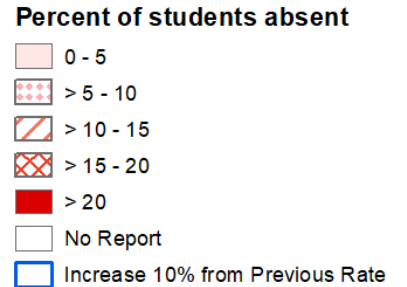
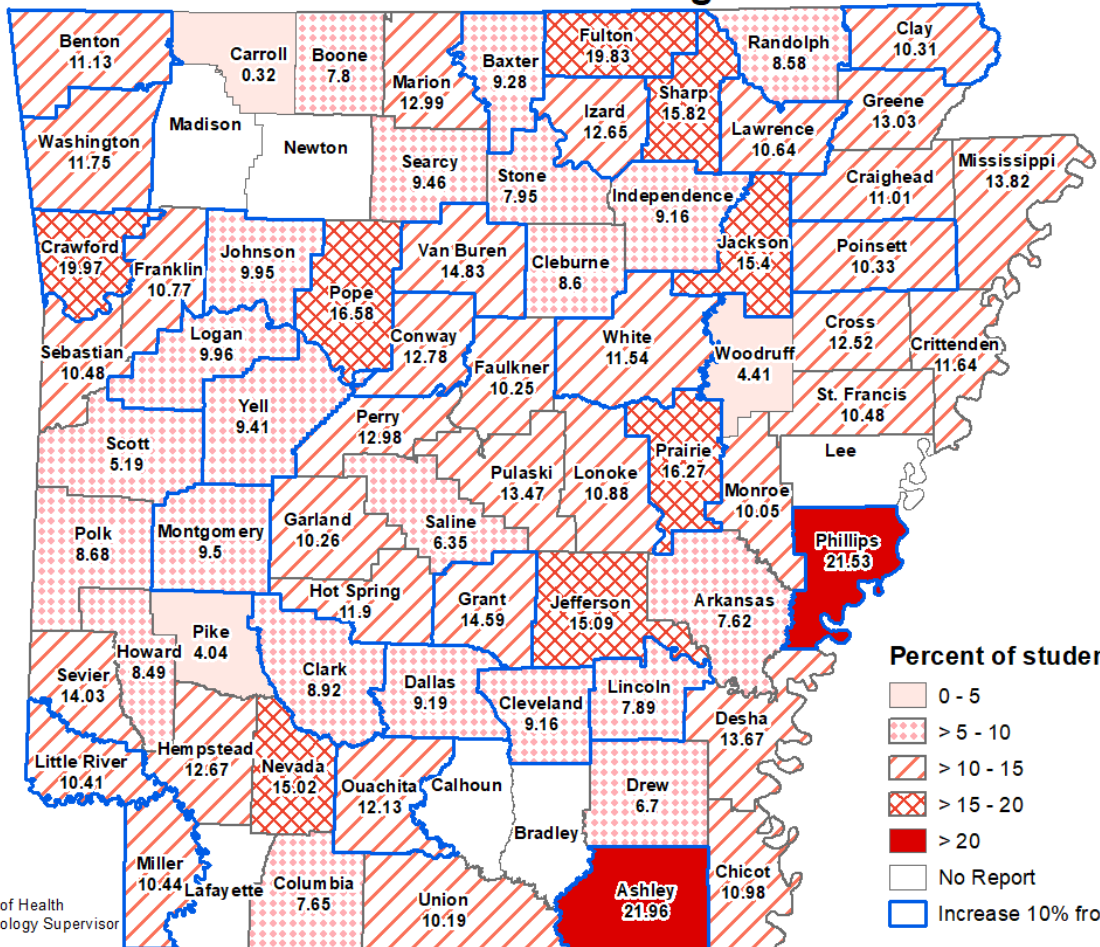
# School Report

## Weekly School Absenteeism Rates, Arkansas Public Schools



## School Absenteeism Rate per County, Arkansas 2021-2022

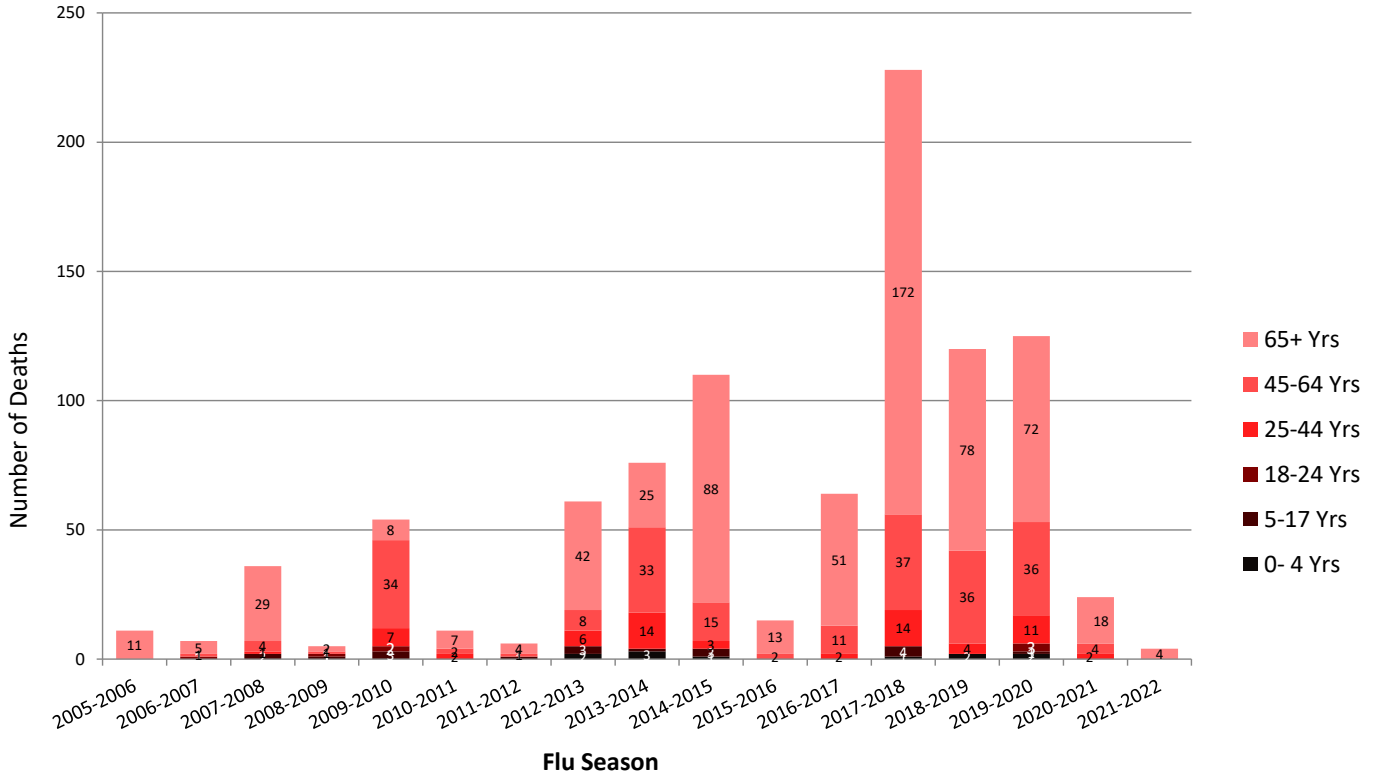
### Percent Absent for Week Ending 1/22/2022



Date: January 25, 2022  
 Source: Arkansas Department of Health  
 Author: Haytham Safi, Epidemiology Supervisor

# Influenza Mortality by Age Group, Arkansas 2005-2022 (Provisional)

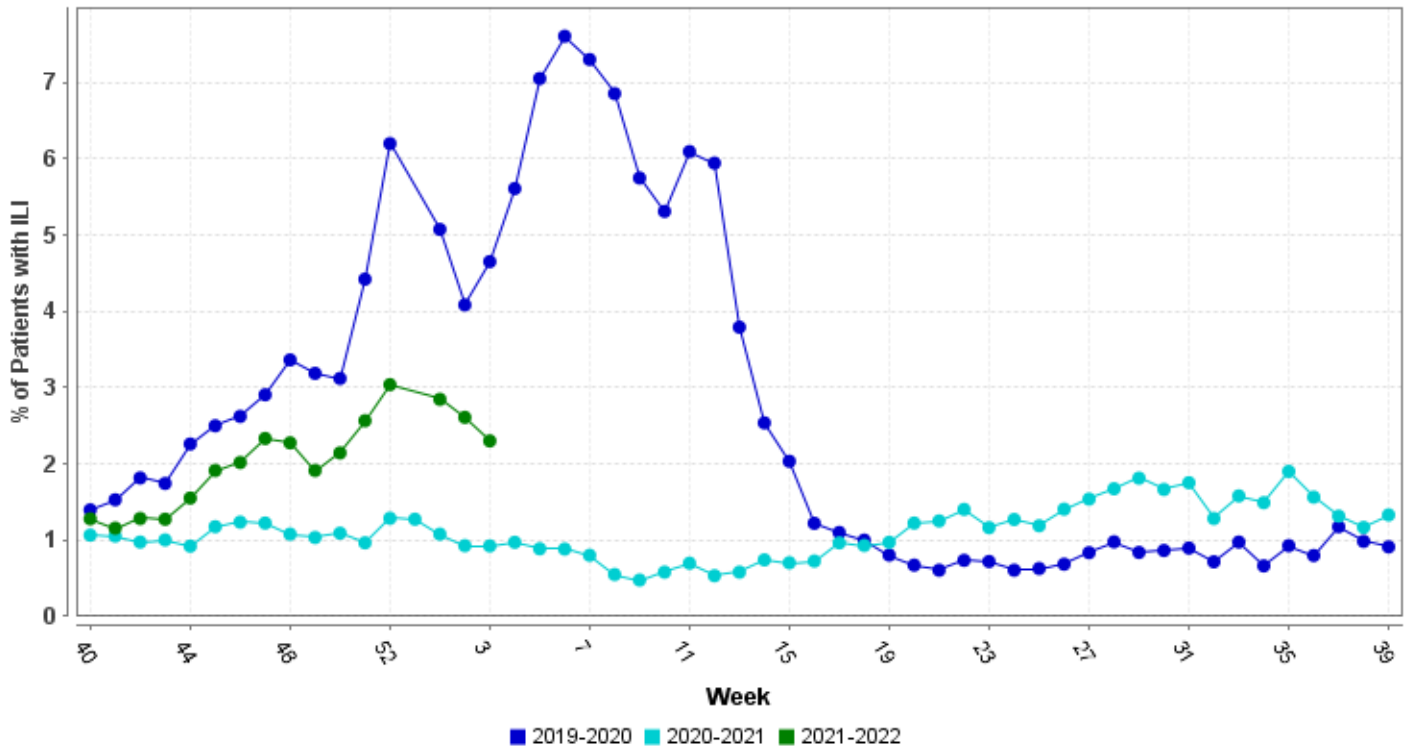
## Report Updated: 1/25/2022



\* All seasons range from week 40 to week 39 except 2009-2010 started week 36  
 Source: ADH Outbreak Response Section, and Center for Health Statistics

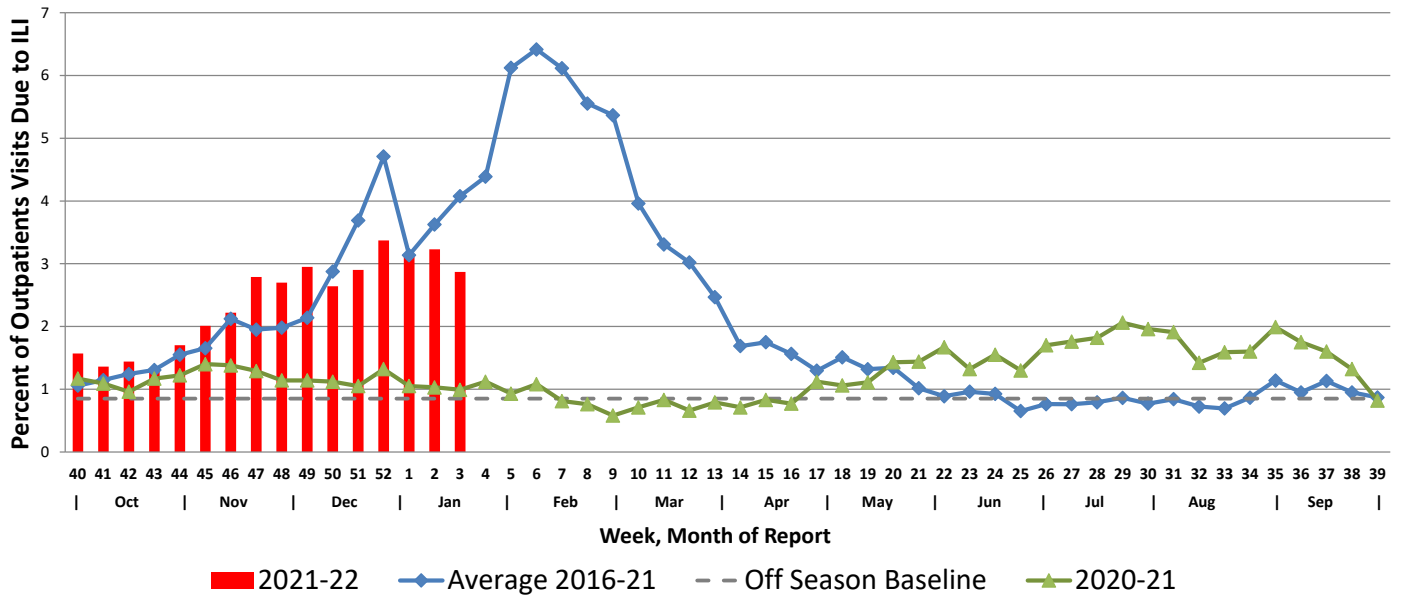
## Hospital Report – Downloaded from ESSENCE (Syndromic Surveillance)

### Percent ER Visits with ILI

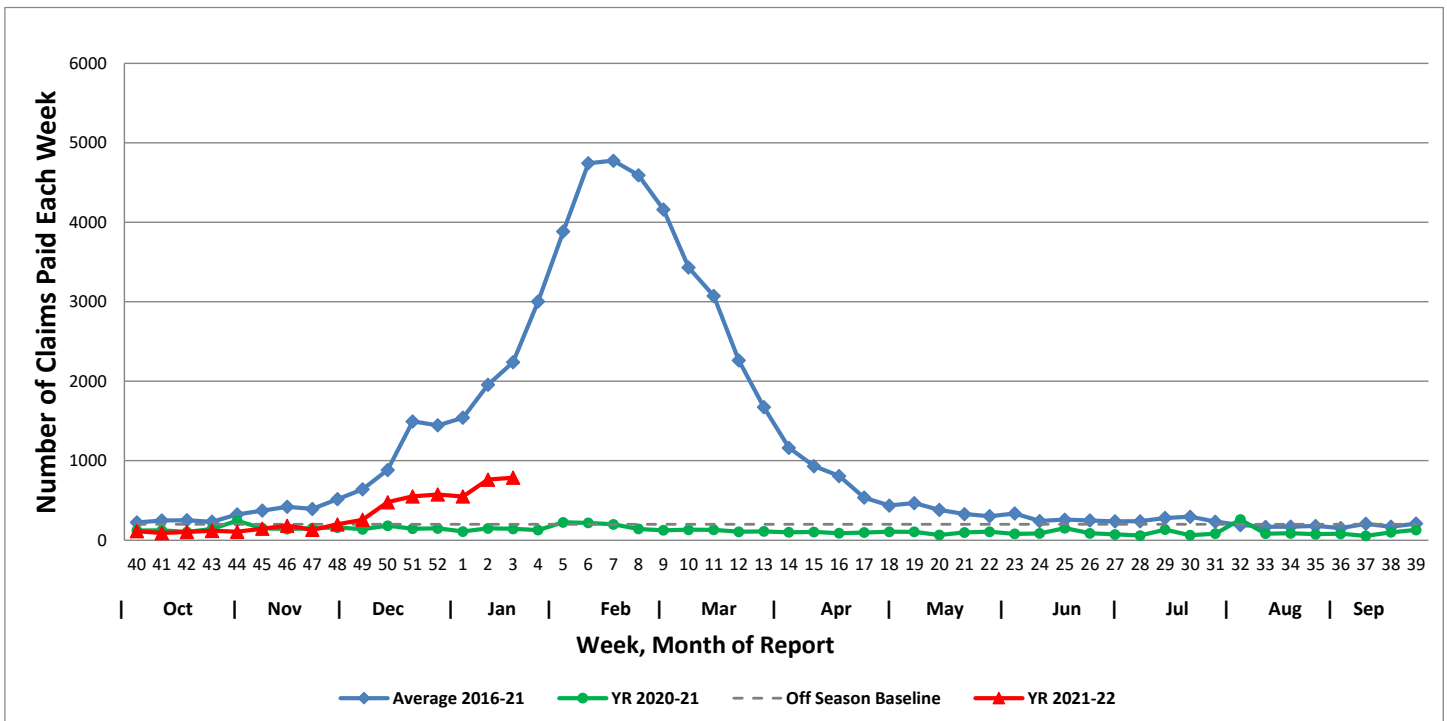


## Arkansas Subset of US Outpatients Influenza Surveillance (ILINET)

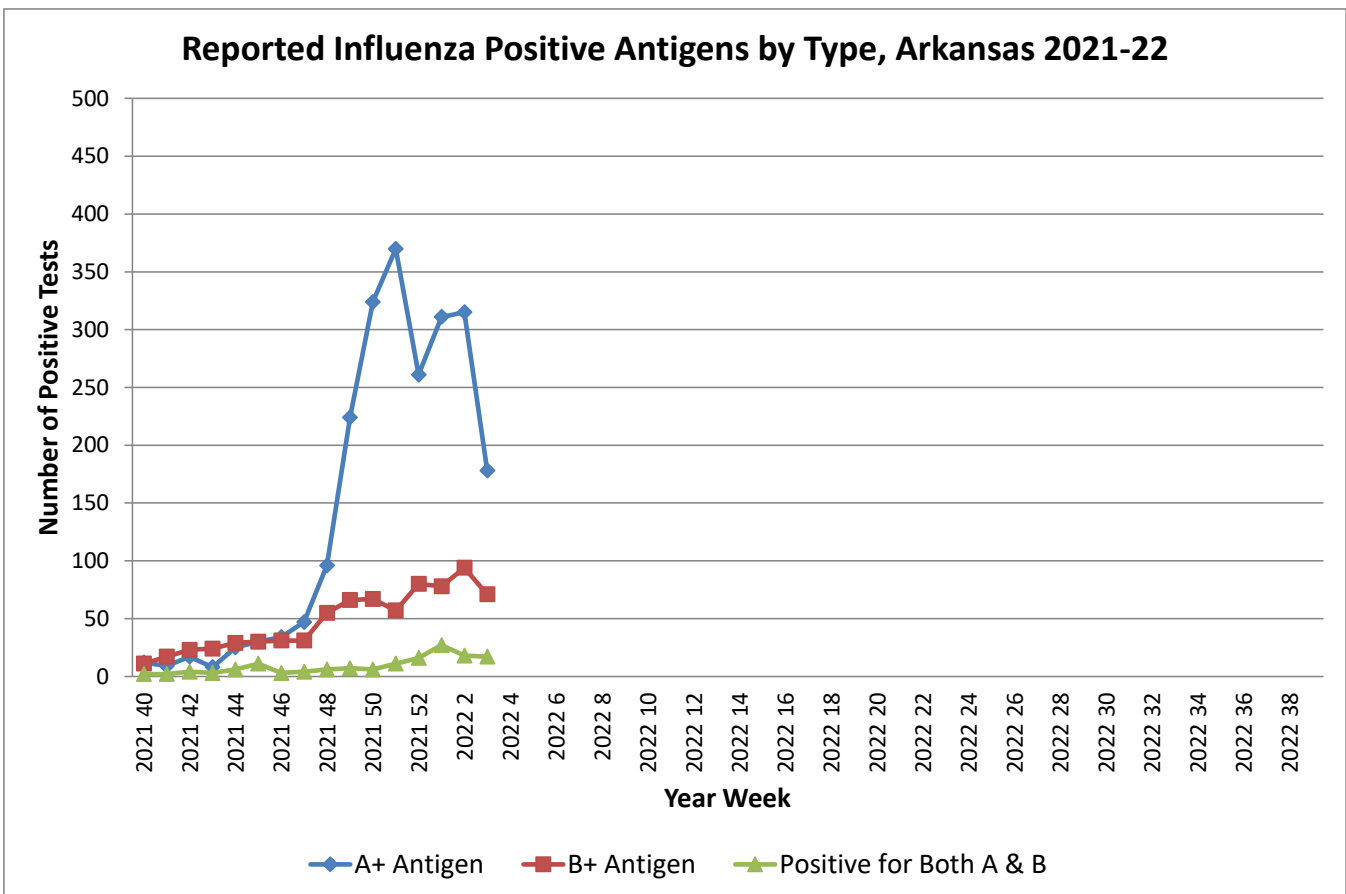
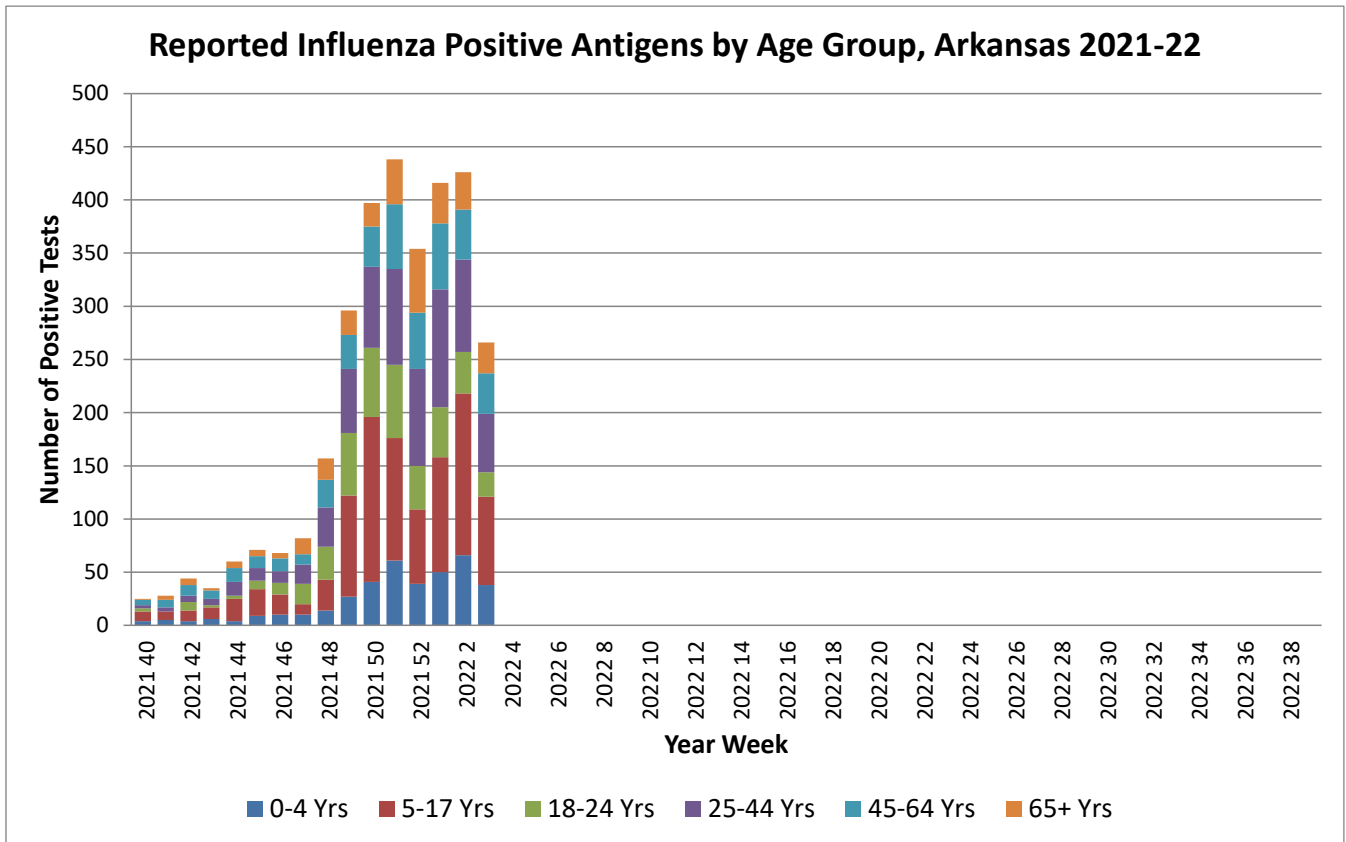
Percentage of Outpatient Visits Due to Influenza-like Illness Reported by ILINet in Arkansas



## Weekly Influenza Claims Paid by Medicaid and BCBS of Arkansas

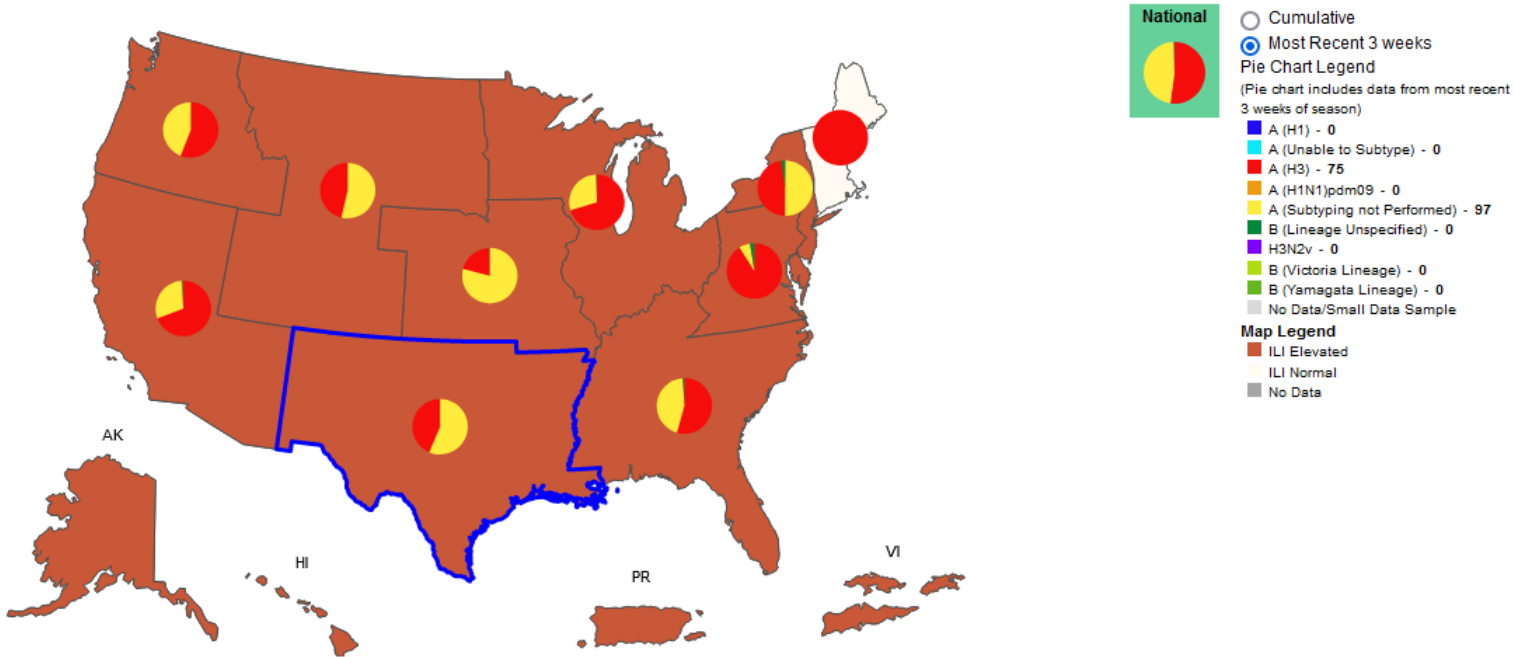


# Antigen Report



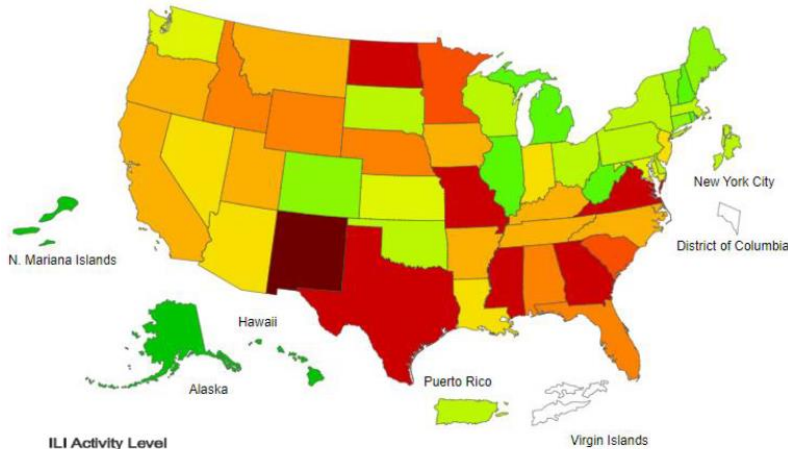
# Influenza Positive Tests Reported to CDC and ILI Activity, by HHS Region Public Health Labs, 2021-2022 Season, Week Ending January 15, 2022

Values in legend are for the highlighted HHS region (Region 6) for the most recent 3 weeks

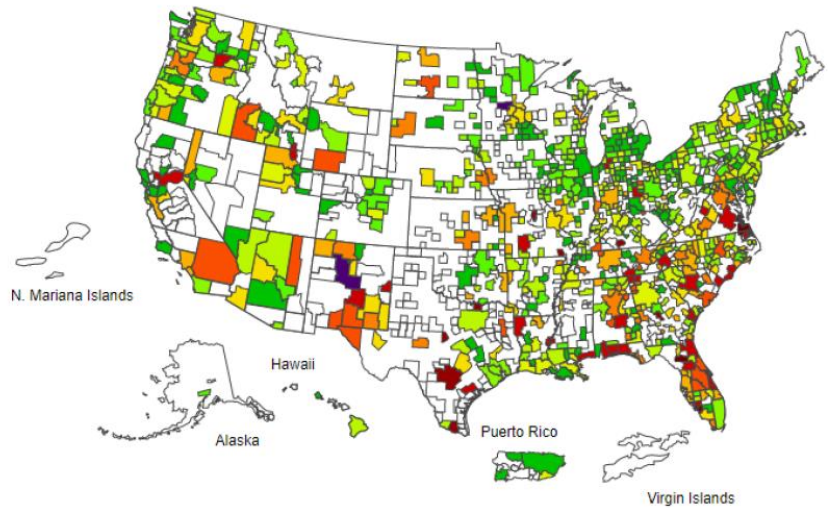
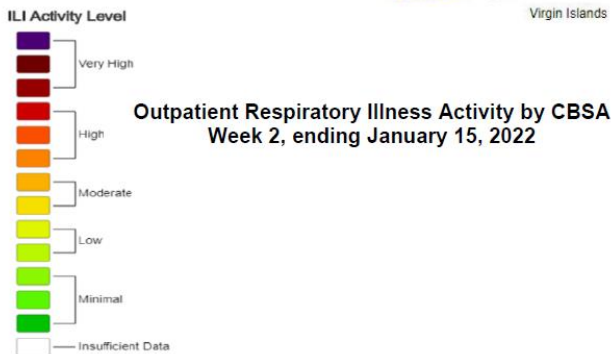


## Influenza-Like-Illness Activity Level Indicator Determined by Data Reported to ILINet

Outpatient Respiratory Illness Activity by Jurisdiction  
Week 2, ending January 15, 2022

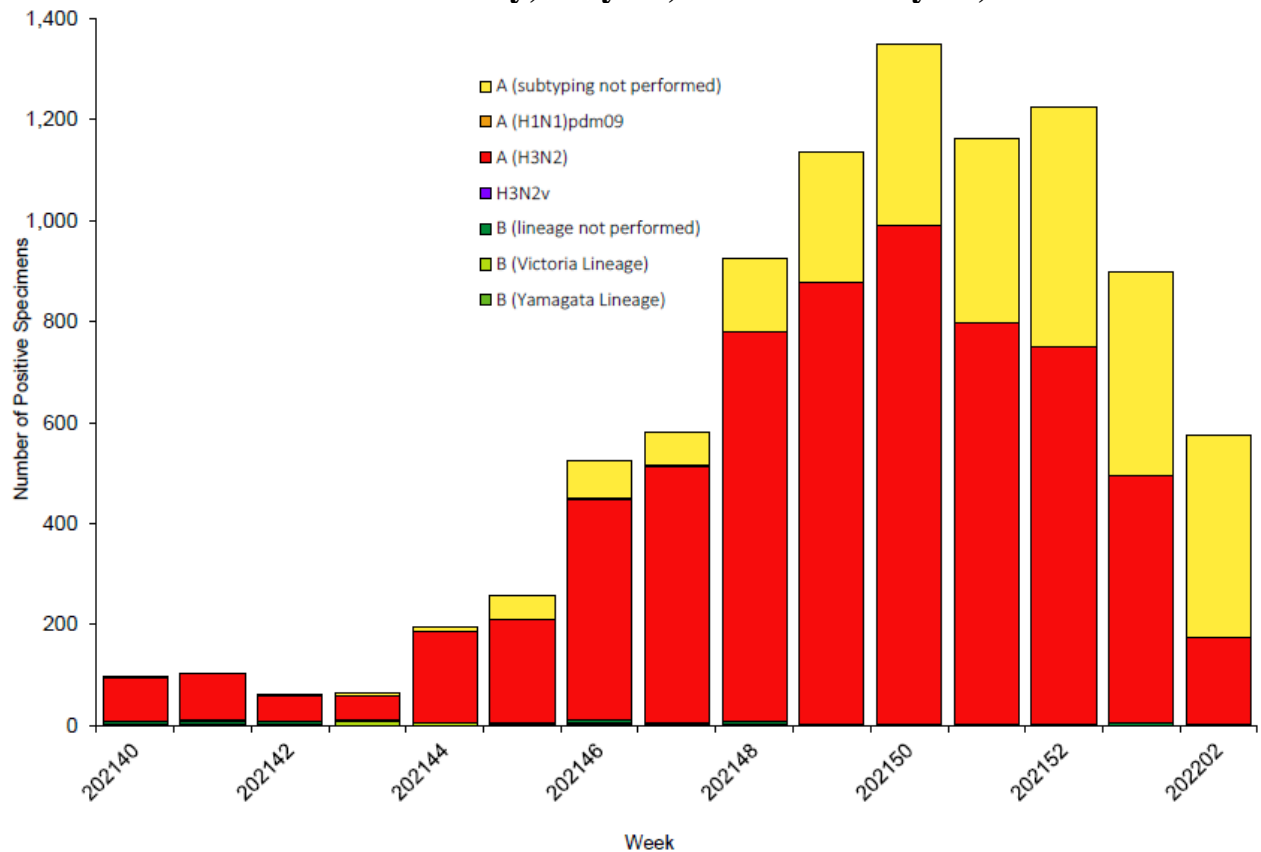


This system monitors visits for ILI (fever and cough or sore throat), not laboratory confirmed influenza and may capture patient visits due to other respiratory pathogens that cause similar symptoms.





## Influenza Positive Tests Reported to CDC by U.S. Public Health Laboratories, National Summary, May 23, 2021 – January 15, 2022



## Pneumonia, Influenza and COVID Mortality from the National Center for Health Statistics Mortality Surveillance System Data as of January 20, 2022, National Data

